

Campaign Goals



CAPACITY-BUILDING

These projects build our capacity to offer high quality services & programming.



ENVIRONMENTAL PERFORMANCE

These projects ensure that our impact on the environment is positive.



ACCESSIBILITY

These projects increase access & reduce barriers for all persons.



HEALTH & WELLBEING

These projects support good health and wellbeing for participants.

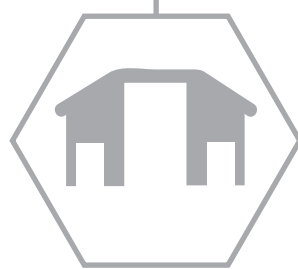


EDUCATION SHELTER



A needed rebuild of the existing shelter will allow us to expand our teaching space, and to address hazards, such as a hole in the roof, decaying wood, and uneven terrain

Phase 1 Goal:
\$50,000

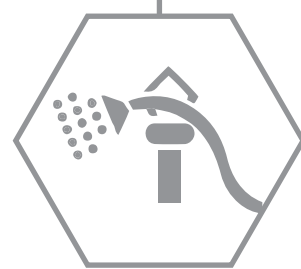


PROGRAMMING SHEDS



The reconstruction of our education and market programming sheds will allow for year-round use and will protect specialized tools and materials

Phase 2 Goal:
\$50,000

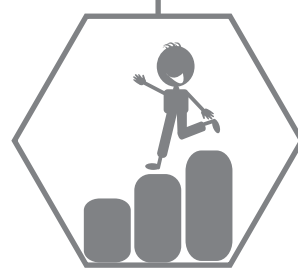


IRRIGATION SYSTEM



The integration of a sustainable irrigation system will allow us to substantially reduce water consumption while maintaining abundant gardens

Phase 3 Goal:
\$40,000



NATURALIZED PLAYScape



As the first naturalized playscape on public lands, this facility will give children the opportunity to engage with and play on natural structures

Phase 4 Goal:
\$25,000

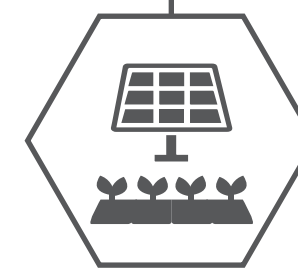


ACCESSIBLE PATHWAYS



The development of pathways to key features, and a permeable floor in the education shelter will increase access for all children and adults

Phase 5 Goal:
\$25,000

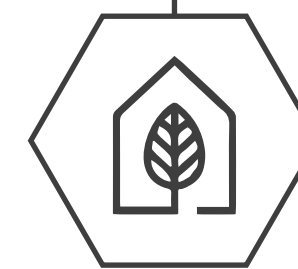


SOLAR & GREEN ROOF



The installation of solar panels will increase programming capacity. A green roof will beautify the shelter, and create habitat and shade

Phase 6 Goal:
\$45,000



NURSERY GREENHOUSE



A major project, the construction of a greenhouse will allow us to conserve and propagate significant local plant species and expand programming

Phase 7 Goal:
\$220,000

Impact Continuum

first,
Immediate hazards are addressed

- Children's programming is maintained

- Safety of all Park users is enhanced

next,
Performance is improved

- Operations are made more sustainable

- Facilities are more accessible and fun for all

finally,
Ongoing capacity is increased

- Programs are expanded and have a deeper impact

- Facilities enable future growth

GreenUP Ecology Park flourishes!

